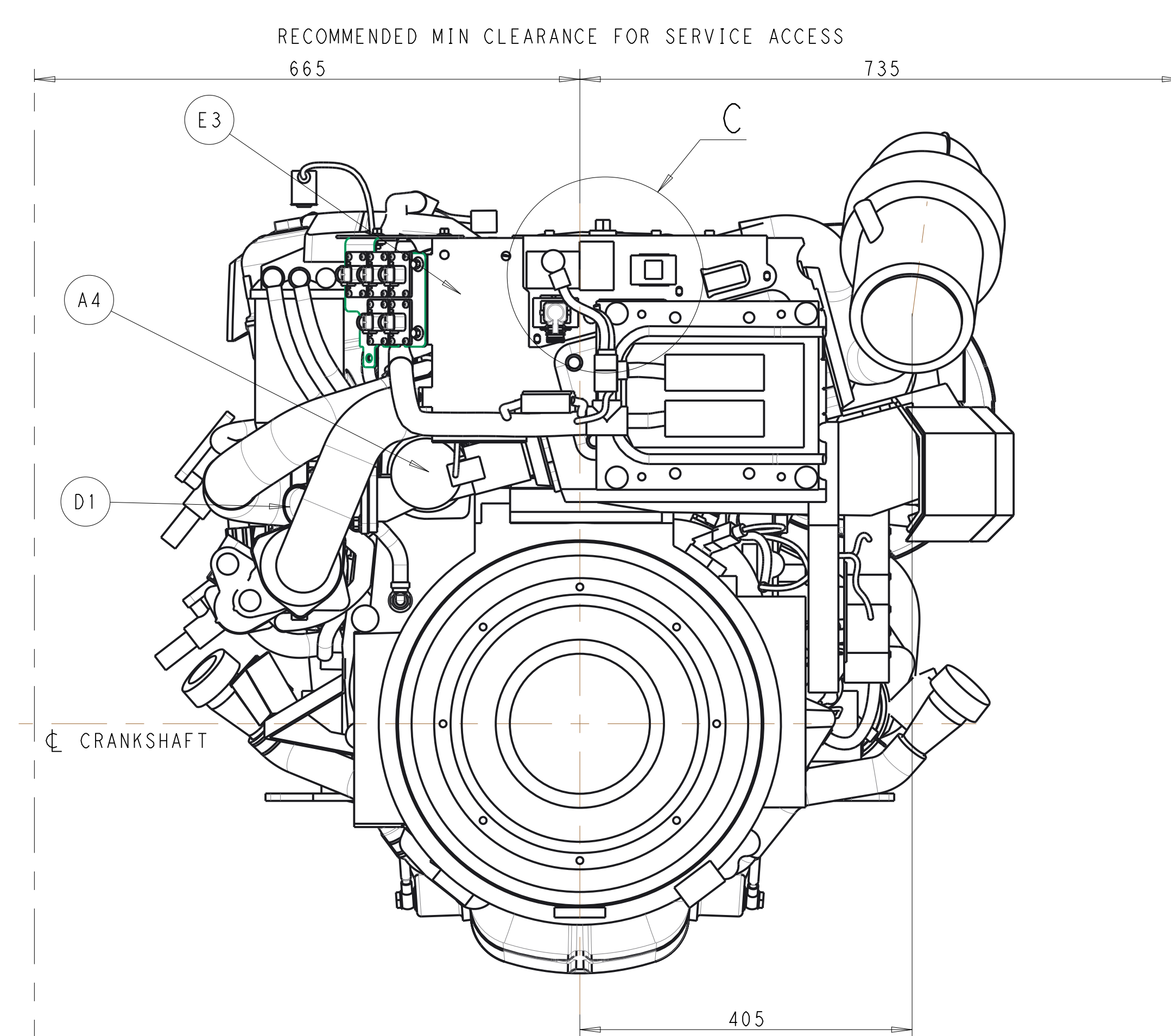
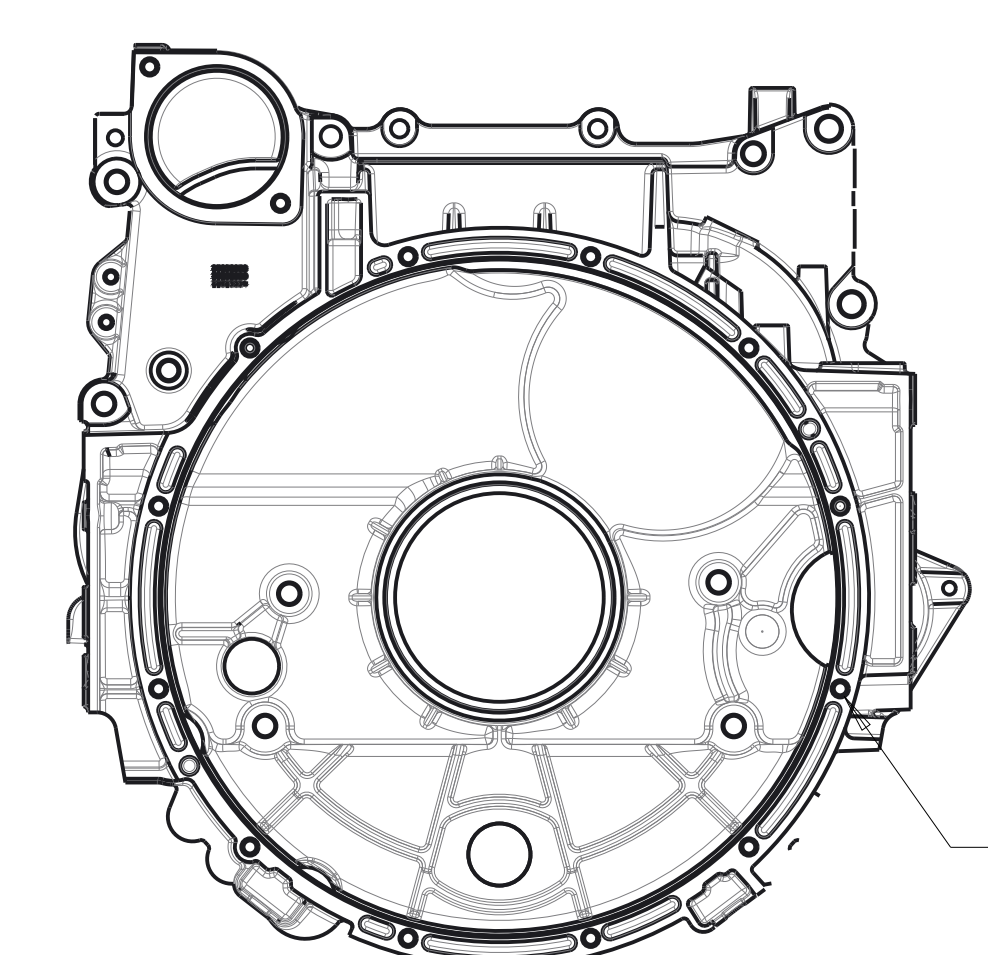
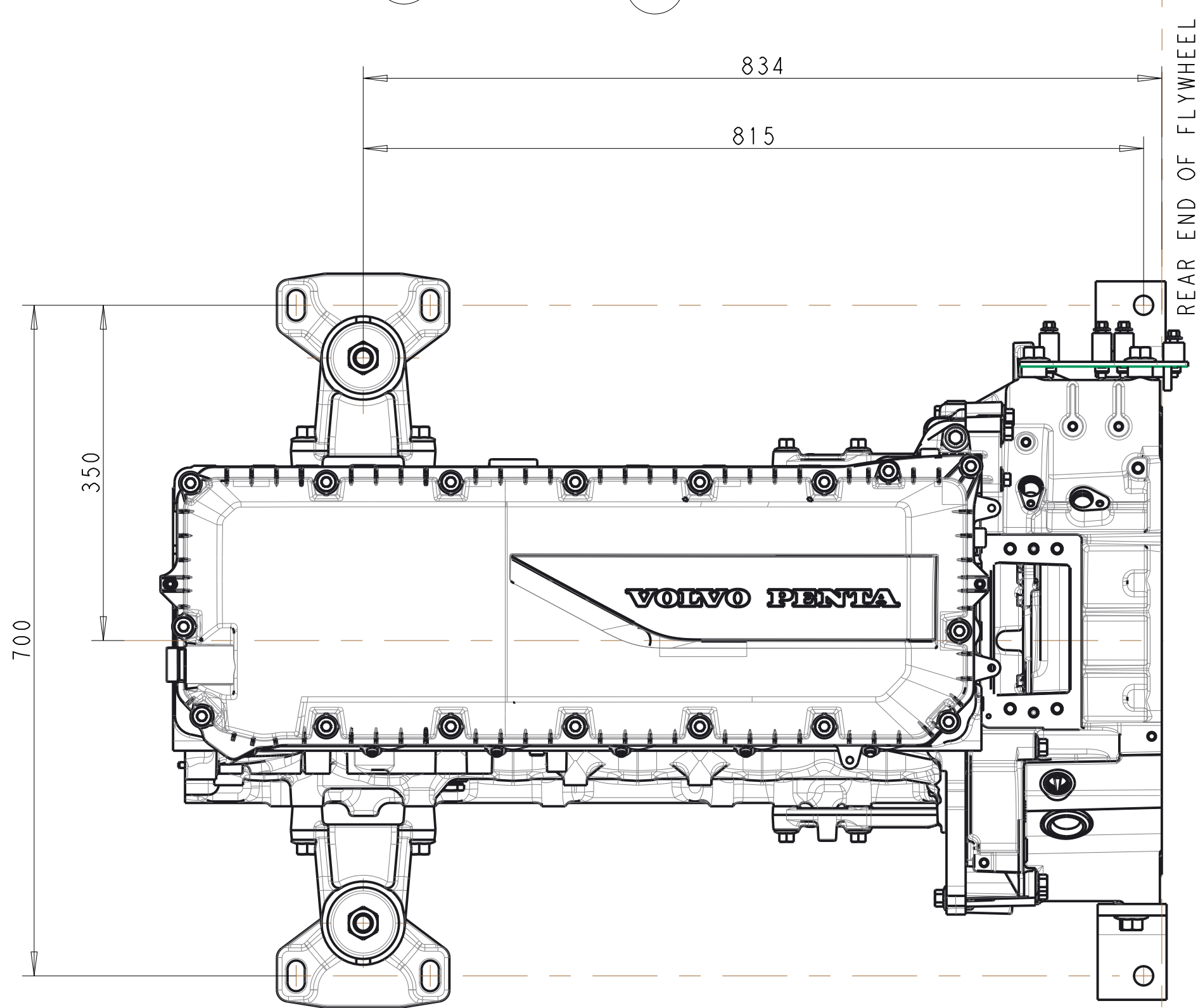
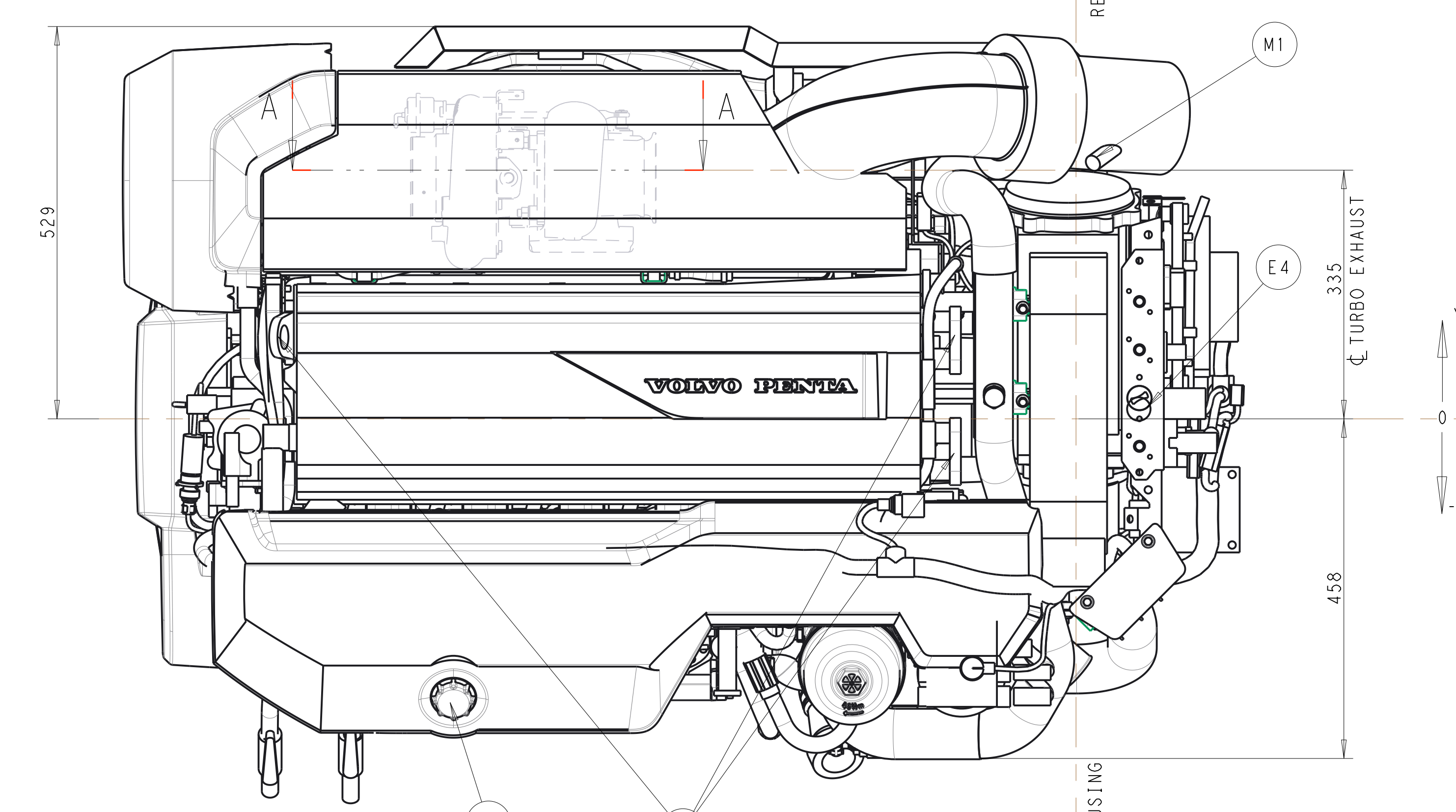
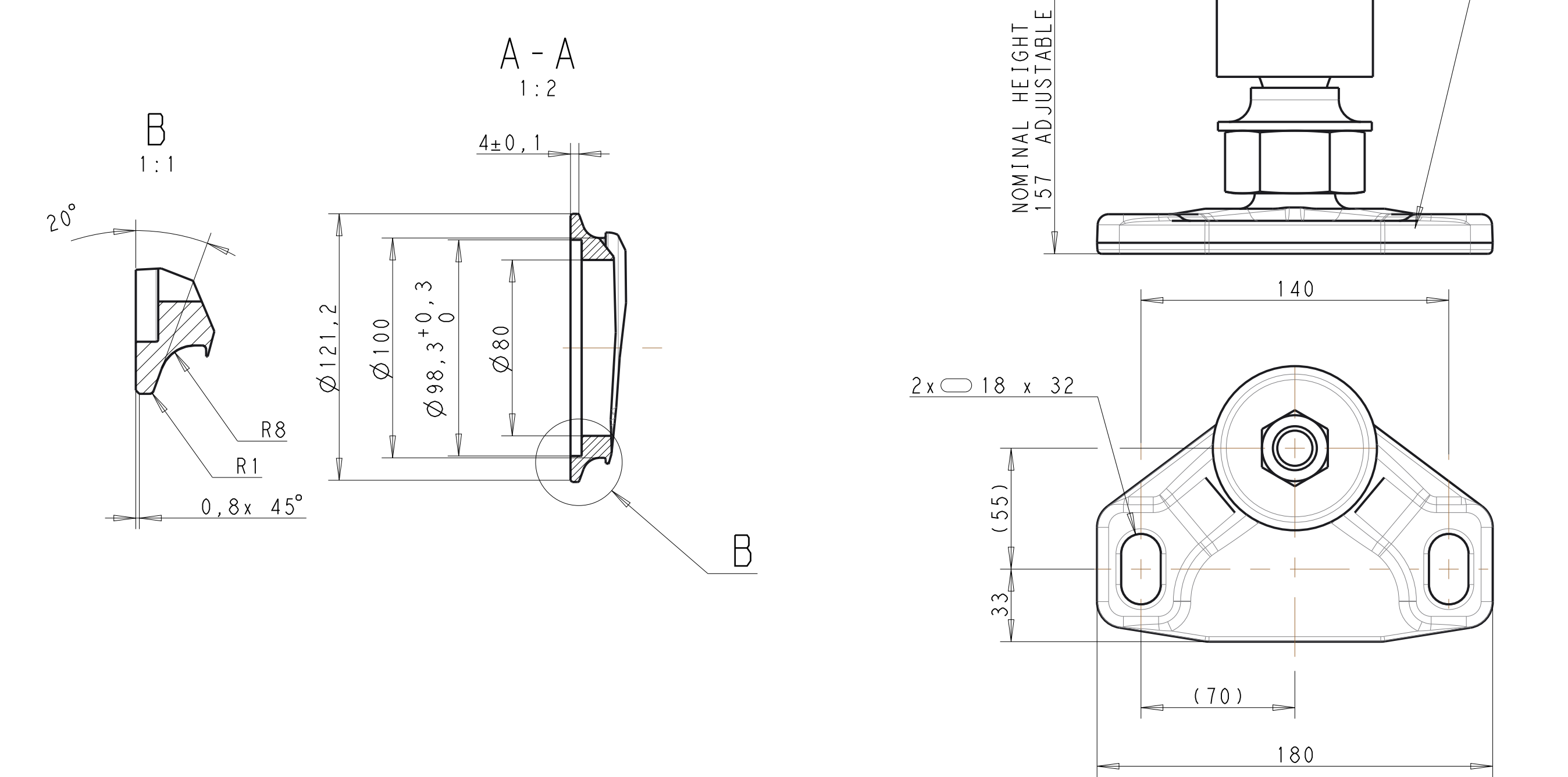


EXHAUST FLANGE



| | X | Y | Z |
|--|-------|-------|-----|
| A1 FUEL CONNECTION INLET. 550mm HOSE WITH 24" TAPERED CONNECTION WITH SWIVEL FITTING. ACC TO DIN 20078 9,5mm(3/8"1 M18x1,5 12mm (INTERNAL THREAD) | -530 | -235 | -50 |
| A2 FUEL CONNECTION OUTLET. 550mm HOSE WITH 24" TAPERED CONNECTION WITH SWIVEL FITTING. ACC TO DIN 20078 9,5mm(3/8"1 M18x1,5 12mm (INTERNAL THREAD) | -570 | -235 | -50 |
| A3 FUEL FILTER | | | |
| A4 SEA WATER PUMP | | | |
| A5 HAND PUMP | | | |
| B1 OIL FILLER CAP | | | |
| B2 OIL FILTER | | | |
| B3 OIL DIPSTICK ENGINE | | | |
| B4 OUTLET FOR OIL BILGE PUMP .12mm / 1/2" ID . HOSE PORT ALT. STARBOARD | | | |
| B5 OIL DIPSTICK ENGINE(OPTION) | | | |
| B6 OIL COOL INLET | -520 | -190 | 115 |
| B7 OIL COOL OUTLET | -570 | -175 | 180 |
| C1 FRESH WATER FILLER (EXPANSION TANK) | | | |
| C2 FRESH WATER DRAIN POINT | | | |
| C3 CONNECTION HOT WATER INLET R 1/2" (OPTION) | -955 | -465 | 25 |
| C4 CONNECTION HOT WATER OUTLET R 1/2" (OPTION) | -1055 | -505 | 220 |
| D1 SEA WATER INLET FOR Ø 52/2" ID HOSE.CAN BE TURNED 360° (I.D Ø44) | | | |
| D2 SEA WATER DRAIN POINT (2x) | | | |
| D3 WET EXHAUST CONNECTION 152mm/6" I.D HOSE | | | |
| E1 CONNECTION BATTERY POS. + | -460 | 260 | 15 |
| E2 CONNECTION BATTERY NEG- | -380 | 305 | 60 |
| E3 ECU CONTROL UNIT | | | |
| E4 AUXILIARY STOP | | | |
| E5 DATALINK | | | |
| E6 SENSORS | | | |
| E7 AUX | | | |
| E8 AUX | | | |
| E9 DIAGNOSE 1 | | | |
| F1 AIR FILTER | | | |
| G1 ELASTIC SUSPENSION (2x) | | | |
| G2 LIFTING EYE (3x) | | | |
| H1 DIAGNOSE 2 | 165 | 90 | 555 |
| H2 CONN. A | 165 | -30 | 500 |
| H3 CONN. B | 180 | -35 | 565 |
| H4 RELAY | | | |
| H5 EATS NA | | | |
| K1 TURBO FLANGE | | | |
| L1 COOLANT INLET | -1100 | -83.5 | 505 |
| L2 COOLANT OUTLET | -1005 | -280 | 135 |
| M1 TEMPARATURE SENSOR, EXHAUST RISER | 75 | 310 | 560 |
| M2 TEMPARATURE SENSOR, RISER OUTLET | -25 | 415 | 510 |

FOR TOLERANCE ON MEASURES PLEASE CONTACT VOLVO PENTA

SCALE 1:5

SYMBOLS, DESIGNATIONS AND GENERAL DRAWING METHODS STD 101-0005

The copying, distribution and utilization of this document as well as the completion of its contents in other media without the prior written consent of Volvo Penta is prohibited. In the event of a patent, utility model or trademark registration.

Document title: **ENGINE DIMENSIONS D8**
 IB BOBTAIL
 ZF TD

Document type: **INSTALLATION DRAWING**
 Over: date Document prafic:

Document No: **22863013** Issue index: **03** Sheet No: **1(11)**

VOLVO PENTA